



SEAD - NSEAD London and South-East Art & Design Teachers Network

Focus : Using Contemporary Practice

3rd MAY 2025 : THE SHOWROOM

Dear members and friends of the NSEAD London & South-East Art & Design Network Group. Our Mid-Winter Event will take place on: **Saturday JMay3rd 2025 at The Showroom.**

There is no cost for attending, to apply, please email Ged Gast gedgast@nsead.org to secure a place. Numbers are limited to 25, so please apply promptly. Places will be allocated in order of receipt.

The Showroom - Saturday 3 May 2025, 10:30am-4.30pm

63 Penfold Street, London NW8 8PQ

<https://theshowroom.org/>

The Showroom is a contemporary art space focused on collaborative approaches to cultural production within its locality and beyond. They commission and produce art and discourse; providing an engaging, collaborative programme that challenges what art can be and do for a wide range of audiences, including art professionals and their local community.

Focus: Using Contemporary Practice - in Schools

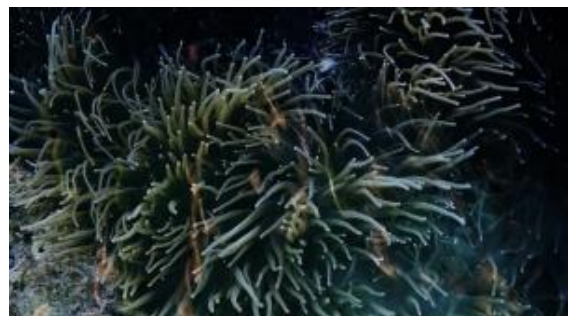


School Art: Where is it? – was published in 2024, in response to the original publication **School Art: What's In It?** (2004). both of which explore the state of art education in England at the time of writing. The new report follows the same methodology but 20 years on, mirroring the work undertaken by Downing and Watson. This research was conceived to ascertain the content of the art curriculum at key stage 3 and 4 and how this may have changed over the interceding 20 years.

The Showroom revisited their own research on [Schooling and Culture 10 years ago](#), and plan to use this research, along with the evidence from [School Art: Where Is It?](#) And [Visualise](#), to contextualise our discussions through a consideration of current art and design practice.

The Programme:

- 10:30am Welcome : tea/coffee & briefing
- 11:00am - 1:00pm Engaging with the Exhibition and Discussion, led by Oliver Herbert - set in the context of both *School Art: Where Is It?* and *Visualise* publications.
- **Exhibition: Oceanic Visions / Moana te kite**
- A Walk around Church Street market as a group, documenting and modelling using drawing and collaboration to create a Curriculum for a Community - on returning to the gallery.
- 1:30 - 2:30pm Lunch & networking.
- 2:30 - 4:00pm
 - What is a Modern and Relevant Curriculum?
 - Planning your Curriculum : strategies for organising and managing team collaboration and a Curriculum Review update.
 - Using contemporary practitioners to contextualise learning and explore Issues.
- 4:00 - 4.15pm Next step ideas and farewells.



Taloi Havini & Michael Toisuta: Hyena Lullaby, 2020 (film still), courtesy of TBA21 Digital Ocean and the artists

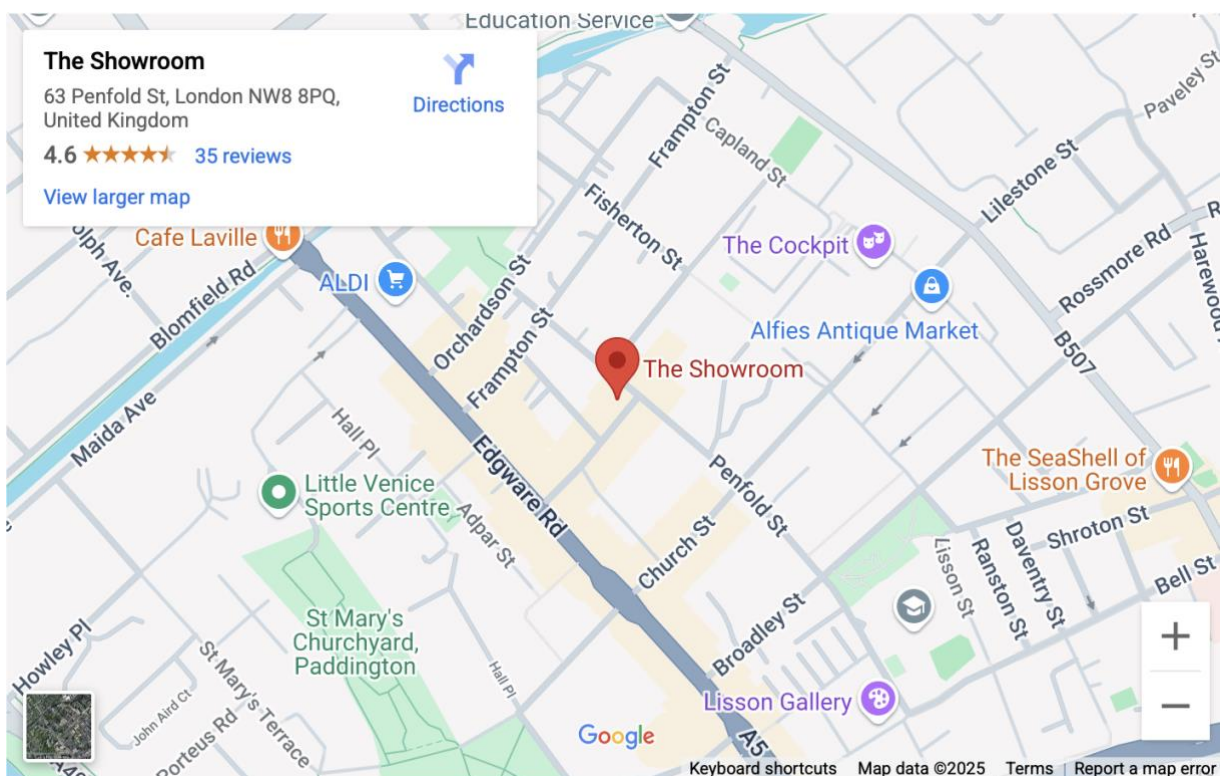


Getting to The Showroom

- The Showroom has step-free access on Boscobel Street to the ground floor Gallery space, and a platform lift to our first floor Studio space.

Travel:

- The Showroom is located on the corner of Penfold Street and Boscobel Street, just off Edgware Road.
- By Underground:
 - The Showroom is a five-minute walk from the Edgware Road underground station (note that there are two station entrances, one for the Hammersmith and City/Circle lines and the other for the Bakerloo line). We are a fifteen minute walk from Paddington Station and the Elizabeth Line.
- By bus:
 - Numerous buses from central London stop on the Edgware Road within a few minutes walk of the space, including the 6, 16, 98, 332 and 414.



NB. Lunch and Refreshments:

Tea/Coffee available on arrival. NB. The Showroom do not have their own café, but there are many places locally for food and refreshments. You are also welcome to bring your own lunch.

Next Network Meeting:

We have an additional Summer Event at The Royal Drawing School on 12th July 2025. Information will be sent out in the next couple of weeks.

All best wishes,
Andy Ash and Ged Gast



London and South-East Area
Art & Design Teachers Network